

B&C SIROCCO /WOMEN - JW 902

LIGHT WEIGHT JACKET / WITHOUT LINING



The Market Reference Windbreaker

- 100% nylon taffeta
- XS - S - M - L - XL - 2XL
- 10 pcs/pack & 30 pcs/carton



- Windproof
- Water-repellent
- Showerproof
- Feminine cut

- Full zip opening with zip pull
- Adjustable storm hood concealed inside the collar
- 2 front pockets
- Fold-away jacket (K-way® system) in pocket with double slider zip
- Adjustable bottom hem with drawcord

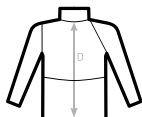


DUO
CONCEPT

with B&C Sirocco
EXISTS IN B&C SIROCCO /KIDS



C2= RAGLAN



SIZES [CM]

B&C SIROCCO /WOMEN JW 902

A HALF CHEST
B BODY LENGTH FROM NECK POINT
C SLEEVE LENGTH
D CENTER BACK LENGTH

	XS	S	M	L	XL	2XL	3XL
A	50	52	54	56	58	60	-
B	70	72	74	76	78	80	-
C	61	63	65	67	69	71	-
D	69	71	73	75	77	79	-