

OUTER WEAR /UNIT



B&C AIR JU 801

PROTECTION

Windproof, showerproof and water-repellent lined windbreaker.

Polyester mesh lining for better wind protection.

Adjustable storm hood concealed in the collar for added protection.

Elasticated cuffs.

STYLE & FIT

Classic windbreaker style, foldaway jacket in pocket with double slider zip.

Standing collar adds to contemporary look.

Adjustable bottom hem for a better fit.

DECORATION

Easy access for decoration via a zip in the lining.

Fabric tested for the following decoration techniques – screen printing, heat transfer, and embroidery.






* COLOURS AVAILABLE IN 3XL

B&C AIR - JU 801

LIGHT WEIGHT JACKET / WITH LINING



The windbreaker with lining

-  **OUT:** 100% nylon taffeta
- IN:** Body lining: 100% polyester mesh
Sleeve lining: 100% polyester taffeta
-  **S - M - L - XL - 2XL - 3XL***
-  **5 pcs/pack & 30 pcs/carton**

* ONLY AVAILABLE IN BLACK, NAVY AND RED



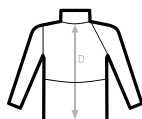
* COLOURS AVAILABLE IN 3XL

-  Windproof
-  Showerproof
-  Water-repellent

- Adjustable storm hood concealed in collar
- Standing collar for great protection
- Front zip opening with zip pull
- Elasticated cuffs
- Adjustable bottom hem with drawcord
- 2 front pockets with zips
- Fold-away jacket (K-Way® system) in right pocket with double slider zip



C2= RAGLAN



SIZES [cm]

B&C AIR JU 801	XS	S	M	L	XL	2XL	3XL
A HALF CHEST	-	59	64	69	74	79	84
B BODY LENGTH FROM NECK POINT	-	72	75	78	81	84	87
C SLEEVE LENGTH	-	55,5	57	58,5	60	61,5	63
D CENTER BACK LENGTH	-	71	74	77	80	83	86

B&C AIR - JU 801

EASY ACCESS SOLUTION

B&C Jackets are equipped with hidden entries to give easy access for decoration and **avoid any limitations** - that you would expect from a lining or padding - **without compromising look, finishing and quality.**

EASY ACCESS ON B&C AIR JACKET



Zip opening at the bottom of the lining.

DESIGNED TO BE DECORATED

Effective **decoration areas** have been **optimised** on every style, to make sure you can make your customer's brand or message stand out.

PRINT AREAS ON B&C AIR JACKET



Front panels



Sleeves



Back panel



*Inside out pocket
when the jacket
is folded in
(K-Way® system)*