

B&C
COLLECTION

OUTER
WEAR
/UNIT

B&C SIROCCO DUO



B&C SIROCCO /DUO

JU 800 & JW 902

*The Market Reference
Windbreaker*

PROTECTION

Showerproof and water-repellent essential windbreaker.

*Adjustable storm hood concealed
in the collar for added protection.*

Elasticated cuffs.

STYLE & FIT

*Essential windbreaker style, foldaway jacket
in pocket with double slider zip.*

*Wide colour palette and range of sizes makes
it versatile for a wide range of uses.*

Adjustable bottom hem for a better fit.

Kid's style completes the line.

DECORATION

*Fabric tested for the following decoration techniques –
screen printing,
heat transfer,
and embroidery.*



B&C SIROCCO - JU 800

LIGHT WEIGHT JACKET / WITHOUT LINING



The Market Reference Windbreaker

- 100% nylon taffeta
- S - M - L - XL - 2XL - 3XL *
- 10 pcs/pack & 50 pcs/carton

* ONLY AVAILABLE IN WHITE, BLACK, NAVY, RED, ROYAL BLUE AND BOTTLE GREEN



* COLOURS AVAILABLE IN 3XL

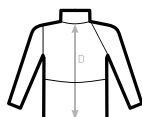
- Windproof
- Water-repellent
- Showerproof

- Full zip opening with zip pull
- Adjustable storm hood concealed inside the collar
- 1 front pocket
- Fold-away jacket (K-way® system) in pocket with double slider zip
- Adjustable bottom hem with drawcord



**DUO
CONCEPT**

with B&C Sirocco /women
EXISTS IN B&C SIROCCO /KIDS



SIZES [cm]

B&C SIROCCO JU 800	XS	S	M	L	XL	2XL	3XL
A HALF CHEST	-	59	64	69	74	79	84
B BODY LENGTH FROM NECK POINT	-	72	75	78	81	84	87
C SLEEVE LENGTH	-	55,5	57	58,5	60	61,5	63
D CENTER BACK LENGTH	-	71	74	77	80	83	86

B&C SIROCCO /WOMEN - JW 902

LIGHT WEIGHT JACKET / WITHOUT LINING



The Market Reference Windbreaker

- 100% nylon taffeta
- XS - S - M - L - XL - 2XL
- 10 pcs/pack & 30 pcs/carton



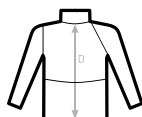
- Windproof
- Water-repellent
- Showerproof
- Feminine cut

- Full zip opening with zip pull
- Adjustable storm hood concealed inside the collar
- 2 front pockets
- Fold-away jacket (K-way® system) in pocket with double slider zip
- Adjustable bottom hem with drawcord



**DUO
CONCEPT**

with B&C Sirocco
EXISTS IN B&C SIROCCO /KIDS



C2= RAGLAN

SIZES [cm]

B&C SIROCCO /WOMEN JW 902

	A	B	C	D
A HALF CHEST	50	70	61	69
B BODY LENGTH FROM NECK POINT	52	72	63	71
C SLEEVE LENGTH	54	74	65	73
D CENTER BACK LENGTH	56	76	67	75

	XS	S	M	L	XL	2XL	3XL
A HALF CHEST	50	52	54	56	58	60	-
B BODY LENGTH FROM NECK POINT	70	72	74	76	78	80	-
C SLEEVE LENGTH	61	63	65	67	69	71	-
D CENTER BACK LENGTH	69	71	73	75	77	79	-

B&C SIROCCO - JU 800

EASY ACCESS SOLUTION

B&C Jackets are equipped with hidden entries to give easy access for decoration and **avoid any limitations** - that you would expect from a lining or padding - **without compromising look, finishing and quality.**

FULL FREE ACCESS FOR DECORATION ON B&C SIROCCO JACKETS



DESIGNED TO BE DECORATED

Effective **decoration areas** have been **optimised** on every style, to make sure you can make your customer's brand or message stand out.

PRINT AREAS ON B&C SIROCCO JACKETS



Front panels



Sleeves



Back panel



*Inside out pocket
when the jacket
is folded in
(K-Way® system)*

B&C SIROCCO /WOMEN - JW 902

EASY ACCESS SOLUTION

B&C Jackets are equipped with hidden entries to give easy access for decoration and **avoid any limitations** - that you would expect from a lining or padding - **without compromising look, finishing and quality.**

FULL FREE ACCESS FOR DECORATION ON B&C SIROCCO /WOMEN JACKETS



DESIGNED TO BE DECORATED

Effective **decoration areas** have been **optimised** on every style, to make sure you can make your customer's brand or message stand out.

PRINT AREAS ON B&C SIROCCO /WOMEN JACKETS



Front panels



Sleeves



Back panel



*Inside out pocket
when the jacket
is folded in
(K-Way® system)*