

B&C  
COLLECTION

**OUTER  
WEAR  
/UNIT**

*Heavy weight puffer bomber  
with fashionable contrasted inner lining*



**B&C**  
**SUPERHOOD**  
**DUO**

# B&C SUPERHOOD /DUO

## JM 940 & JW 941

### PROTECTION

*Feather touch padding keeps you warm and comfortable.*

*Padded hood: obvious, detachable and adjustable. It adds style and ensures protection when the weather gets bad.*

*AC coated, showerproof, breathable and windproof outer shell.*

*Standing collar, full length internal stormflap and rib on cuffs + hem for wind protection.*

### STYLE & FIT

*Contemporary bomber style.*

*Heavyweight puffer bomber with cotton feel 2x2 heavy rib on cuffs and hem.*

*The combination of a plain outer colour with contrasting inner lining adds a modern appearance, creating high value perception whilst not hindering identity application.*

*Retail cut for a contemporary image.*

*Bold accentuated premium accessories for an outstanding look.*

*Wide colour choice supports any idea and/or identity and creates strong visibility when needed.*

### MADE TO LAST

*Heavy polyester rib (cotton feel) with elastane for better shape retention and durability.*

*High quality accessories and tone-on-tone SBS zippers.*

### DECORATION

*Left chest and back panels with easy access hidden zips offer optimised customisation areas.*

*Fabric tested for the following decoration techniques – screen printing, heat transfer, sublimation (for white only), and embroidery.*



# B&C SUPERHOOD /MEN - JM 940

## HEAVY WEIGHT JACKET / DOWN JACKET



Heavyweight puffer bomber with fashionable contrasted inner lining

**POLYESTER 300T TAFFETA**

Outer layer: 100% polyester 300T taffeta

Inner layer: 100% polyester padded taffeta with feather touch padding

S - M - L - XL - 2XL - 3XL

1 pc/pack & 10 pcs/carton

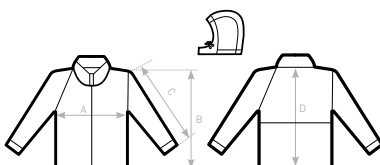


- Adjustable, removable padded hood
- Left chest and back (shoulder to middle back) panels with hidden zips for easy decoration access
- Standing collar, full length internal stormflap and cotton feel 2x2 rib on cuffs and hem for wind protection
- Bomber style, retail cut for a contemporary image
- 2 zipped hand pockets, 1 inner wallet pocket
- Fabric tested for the following decoration techniques: screen printing, heat transfer, sublimation (for white only) and embroidery



**DUO  
CONCEPT**

with B&C Superhood /w.



B&C SUPERHOOD /MEN JM 940	XS	S	M	L	XL	2XL	3XL
A HALF CHEST	-	55	58	61	64	67	70
B BODY LENGTH FROM NECK POINT	-	72	74	76	78	80	82
C SLEEVE LENGTH	-	67	68,5	70	71,5	73	74,5
D CENTER BACK LENGTH	-	69,5	71,5	73,5	75,5	77,5	79,5

# B&C SUPERHOOD /WOMEN - JW 941

## HEAVY WEIGHT JACKET / DOWN JACKET





**Heavyweight puffer bomber with fashionable contrasted inner lining**

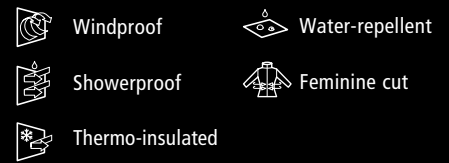
**POLYESTER 300T TAFFETA**

Outer layer: 100% polyester 300T taffeta

Inner layer: 100% polyester padded taffeta with feather touch padding

 XS - S - M - L - XL - 2XL

 1 pc/pack & 10 pcs/carton

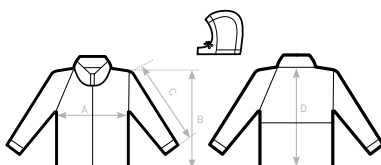


- Adjustable, removable padded hood
- Left chest and back (shoulder to middle back) panels with hidden zips for easy decoration access
- Standing collar, full length internal stormflap and cotton feel 2x2 rib on cuffs and hem for wind protection
- Bomber style, retail cut for a contemporary image
- 2 zipped hand pockets
- Fabric tested for the following decoration techniques: screen printing, heat transfer, sublimation (for white only) and embroidery



**DUO  
CONCEPT**

with B&C Superhood /m.



**B&C SUPERHOOD /WOMEN JW 941**

	XS	S	M	L	XL	2XL	3XL
A HALF CHEST	49	52	55	58	61	64	-
B BODY LENGTH FROM NECK POINT	61	63	65	67	69	71	-
C SLEEVE LENGTH	65,5	67	68,5	70	71,5	73	-
D CENTER BACK LENGTH	59	61	63	65	67	69	-

# B&C SUPERHOOD /MEN - JM 940

## EASY ACCESS SOLUTION

B&C Jackets are equipped with hidden entries to give easy access for decoration and **avoid any limitations** - that you would expect from a lining or padding - **without compromising look, finishing and quality.**

### EASY ACCESS ON B&C SUPERHOOD /MEN JACKETS



*Hidden zips located on left chest and back panels in the middle of the back.*

## DESIGNED TO BE DECORATED

Effective decoration areas have been **optimised** on every style, to make sure you can make your customer's brand or message stand out.

### PRINT AREAS ON B&C SUPERHOOD /MEN JACKETS



*Left chest*

*Upper back panel*

# B&C SUPERHOOD /WOMEN - JW 941

## EASY ACCESS SOLUTION

B&C Jackets are equipped with hidden entries to give easy access for decoration and **avoid any limitations** - that you would expect from a lining or padding - **without compromising look, finishing and quality.**

### EASY ACCESS ON B&C SUPERHOOD /WOMEN JACKETS



*Hidden zips located on left chest and back panels in the middle of the back.*

## DESIGNED TO BE DECORATED

Effective decoration areas have been **optimised** on every style, to make sure you can make your customer's brand or message stand out.

### PRINT AREAS ON B&C SUPERHOOD /WOMEN JACKETS



*Left chest*



*Upper back panel*