

B&C  
COLLECTION

OUTER  
WEAR  
/UNIT

B&C

TROOPER

DUO



# B&C TROOPER /DUO

## JM 963 & JW 964

*Trendy light weight bomber jacket  
with ergonomic concealed hood*

### PROTECTION

*Showerproof AC coating,  
breathable and windproof outer shell.*

*Diamond mesh lining improves breathability  
and comfort.*

*Ergonomic hood (adjusted with elastic at the top)  
concealed in the collar.*

*Ribbed cuffs and hem for wind protection.*

*Forward shoulder seams for better comfort  
and water protection.*

### STYLE & FIT

*Light weight bomber style with cotton feel  
heavy rib on cuffs and bottom hem.*

*The combination of a plain outer colour with contrasting  
inner lining adds a modern appearance, creating a high value  
perception whilst not hindering identity application.*

*Trendy and retail cut for a contemporary image.*

*Soft handfeel fabric adds premium perception.*

*Wide colour choice will support any idea and/or identity  
and create strong visibility when needed.*

*Bomber shape collar.*

### MADE TO LAST

*Reinforced topstitched seams for extra durability.*

*Polyester heavy rib with elastane for better shape  
retention and durability.*

*Long lasting high quality tone-on-tone SBS zipper.*

### DECORATION

*Zip at lower back for easy full decoration access  
(front - back - sleeves).*

*Fabric tested for the following decoration techniques -  
screen printing,  
heat transfer,  
sublimation (for white only),  
and embroidery.*





# B&C TROOPER /MEN - JM 963

## LIGHT WEIGHT JACKET / WITH LINING



**Trendy light weight bomber jacket with ergonomic concealed hood**

**POLYESTER 210T TAFFETA**

Outer layer: 100% polyester 210T taffeta

Body lining: 100% polyester mesh

Sleeve lining: 100% polyester taffeta

S - M - L - XL - 2XL - 3XL

5 pcs/pack & 30 pcs/carton



WHITE WITH  
WHITE LINING



BLACK WITH  
COBALT BLUE LINING



NAVY WITH  
NEON GREEN LINING



RED WITH  
WARM GREY LINING



ROYAL BLUE WITH  
NEON ORANGE LINING



REAL GREEN WITH  
NEON ORANGE LINING



Showerproof

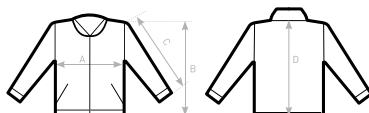


Windproof

- Fashionable contrasted diamond mesh lining, improves breathability and comfort
- Self fabric inner collar
- Contemporary cotton feel heavy rib on cuffs and bottom hem
- Forward shoulder seams for better comfort and water protection
- 2 zipped hand pockets
- 1 inner wallet pocket with closing tabs
- Zip at lower back gives easy full decoration access (front - back - sleeves)
- Fabric tested for the following decoration techniques - screen printing, heat transfer, sublimation (for white only), and embroidery



**DUO  
CONCEPT**  
with B&C Trooper /w.



SIZES [cm]

B&C TROOPER /MEN JM 963	XS	S	M	L	XL	2XL	3XL
A HALF CHEST	-	56	59	62	65	68	71
B BODY LENGTH FROM NECK POINT	-	68	70	72	74	76	78
C SLEEVE LENGTH	-	66,5	68	69,5	71	72,5	74
D CENTER BACK LENGTH	-	66,5	68,5	70,5	72,5	74,5	76,5

# B&C TROOPER /WOMEN - JW 964

## LIGHT WEIGHT JACKET / WITH LINING



**Trendy light weight bomber jacket with ergonomic concealed hood**

**POLYESTER 210T TAFFETA**

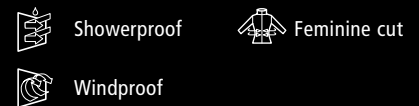
Outer layer: 100% polyester 210T taffeta

Body lining: 100% polyester mesh

Sleeve lining: 100% polyester taffeta

XS - S - M - L - XL - 2XL

5 pcs/pack & 10 pcs/carton

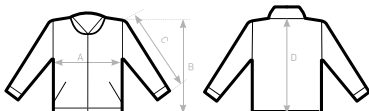


- Fashionable contrasted diamond mesh lining, improves breathability and comfort
- Self fabric inner collar
- Contemporary cotton feel heavy rib on cuffs and bottom hem
- Forward shoulder seams for better comfort and water protection
- 2 zipped hand pockets
- 1 inner wallet pocket with closing tabs
- Zip at lower back gives easy full decoration access (front - back - sleeves)
- Fabric tested for the following decoration techniques - screen printing, heat transfer, sublimation (for white only), and embroidery



**DUO  
CONCEPT**

with B&C Trooper /men



**SIZES [cm]**

B&C TROOPER /WOMEN JW 964	XS	S	M	L	XL	2XL	3XL
A HALF CHEST	48	51	54	57	60	63	-
B BODY LENGTH FROM NECK POINT	60	62	64	66	68	70	-
C SLEEVE LENGTH	62	63,5	65	66,5	68	69,5	-
D CENTER BACK LENGTH	58,5	60,5	62,5	64,5	66,5	68,5	-

# B&C TROOPER /DUO - JM 963 & JW 964

## EASY ACCESS SOLUTION

B&C Jackets are equipped with hidden entries to give easy access for decoration and **avoid any limitations** - that you would expect from a lining or padding - **without compromising look, finishing and quality.**

### EASY ACCESS ON B&C TROOPER /DUO JACKETS



*Zip opening at the bottom of the lining.*

## DESIGNED TO BE DECORATED

Effective decoration areas have been **optimised** on every style, to make sure you can make your customer's brand or message stand out.

### PRINT AREAS ON B&C TROOPER /DUO JACKETS



*Front panels*

*Sleeves*

*Back panel*