

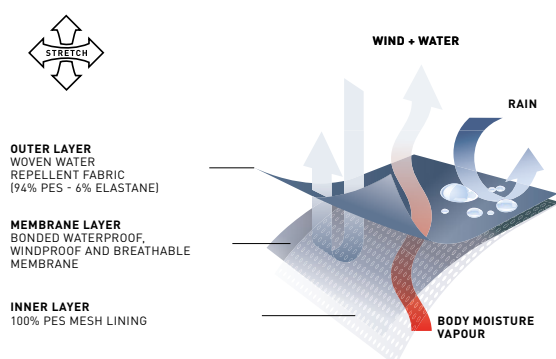
B&C
COLLECTION

OUTER
WEAR
/UNIT

B&C X-LITE SOFTSHELL DUO



B&C X-LITE SOFTSHELL /DUO JM 951 & JW 938



LIGHTWEIGHT PROTECTION

Highly waterproof, extremely breathable and windproof thanks to its 3 layer laminate Softshell construction.

Light woven Softshell outer and polyester mesh inner with a bonded membrane between them.

COMFORT & FIT

Contemporary styling and details.

4-way stretch structure, actively supports freedom of movement.

Mid-layer membrane blocks wind and water, and whisks body moisture vapour away to the outer layer where it evaporates quickly, regulating body temperature.

Performance fit – ergonomic body shape and articulated raglan sleeves.

Media player compatibility and lightweight packability. Make it the perfect partner for an active life.

B&C LIGHT PACK CONCEPT:



DECORATION

Fabric tested for the following decoration techniques – screen printing, heat transfer, sublimation (for white only), and embroidery.



B&C X-LITE SOFTSHELL /MEN - JM 951



Media player compatible: small opening for earphone cord in right chest pocket + hidden earphone loop on the collar

Chin protector

Full front reverse zip fastener with zip pull

Right chest zipped pocket with reverse zip fastening, garage & zip pull

Full inner placket in outer Softshell fabric + 2 inner pockets

Performance fit: ergonomic body shape articulated raglan sleeves

2 front zipped pockets

Adjustable bottom hem with elasticated drawcords and stoppers

Adjustable cuffs with rubber tab

High performance 3-layer Softshell jacket - Light Pack jacket

Outer layer: 94% polyester - 6% elastane
Woven Softshell (300 g/m² - total weight - all layers)

Mid layer: bonded breathable membrane, windproof, waterproof

Inner layer: 100% polyester mesh

Waterproof: 5000 mm

Breathable: 5000 MVP

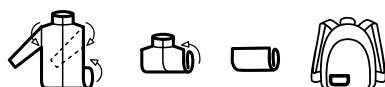
S - M - L - XL - 2XL - 3XL

1 pc/pack & 10 pcs/carton



- Windproof
- Waterproof
- Thermo-insulated
- Breathable
- Water-repellent
- 4-way stretch
- Critical seams taped

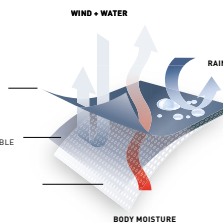
B&C LIGHT PACK CONCEPT:



OUTER LAYER
WOVEN WATER REPELLENT FABRIC (94% PES - 6% ELASTANE)

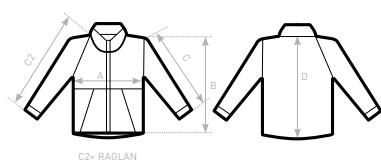
MEMBRANE LAYER
BONDED WATERPROOF, WINDPROOF AND BREATHABLE MEMBRANE

INNER LAYER
100% PES MESH LINING



DUO
CONCEPT

with B&C X-Lite Softshell /women



SIZES [cm]

B&C X-LITE SOFTSHELL /M. JM 951

	XS	S	M	L	XL	2XL	3XL
A HALF CHEST	-	52,8	55,8	58,8	62,8	66,8	70,8
B BODY LENGTH FROM NECK POINT	-	68,5	70	71,5	73	74,5	76
C2 SLEEVE LENGTH FROM NECK POINT	-	79	80,4	81,8	84	86,2	88,4
D CENTER BACK LENGTH	-	65,6	67,2	68,3	70,1	71,4	73,2

B&C X-LITE SOFTSHELL /WOMEN - JW 938

SOFTSHELL JACKET



Media player compatible: small opening for earphone cord in right chest pocket + hidden earphone loop on the collar

Chin protector

Full front reverse zip fastener with zip pull

Right chest zipped pocket with reverse zip fastening, garage & zip pull

Full inner placket in outer Softshell fabric + 2 inner pockets

Performance fit: ergonomic body shape articulated raglan sleeves

2 front zipped pockets

Adjustable cuffs with rubber tab

Adjustable bottom hem with elasticated drawcords and stoppers

High performance 3-layer Softshell jacket - Light Pack jacket

Outer layer: 94% polyester - 6% elastane
Woven Softshell (300 g/m² - total weight - all layers)

Mid layer: bonded breathable membrane, windproof, waterproof

Inner layer: 100% polyester mesh

Waterproof: 5000 mm

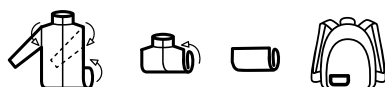
Breathable: 5000 MVP

XS - S - M - L - XL - 2XL

1 pc/pack & 10 pcs/carton



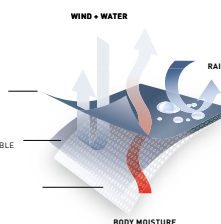
B&C LIGHT PACK CONCEPT:



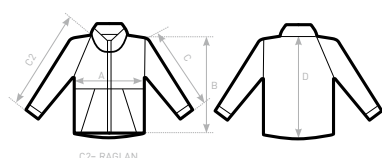
OUTER LAYER
WOVEN WATER REPELLENT FABRIC (94% PES - 6% ELASTANE)

MEMBRANE LAYER
BONDED WATERPROOF, WINDPROOF AND BREATHABLE MEMBRANE

INNER LAYER
100% PES MESH LINING



DUO CONCEPT
with B&C X-Lite Softshell /men



SIZES [cm]

B&C X-LITE SOFTSHELL /W. JW 938	XS	S	M	L	XL	2XL	3XL
A HALF CHEST	44,5	47,5	50,5	53,5	57,5	61,5	-
B BODY LENGTH FROM NECK POINT	63	64,5	66	67,5	69	70,5	-
C2 SLEEVE LENGTH	72,2	73,7	75,1	76,5	78,7	80,9	-
D CENTER BACK LENGTH	63	64,1	65,2	66,8	68,1	69,9	-

B&C X-LITE SOFTSHELL /DUO - JM 951 & JW 938

EASY ACCESS SOLUTION

B&C Jackets are equipped with hidden entries to give easy access for decoration and **avoid any limitations** - that you would expect from a lining or padding - **without compromising look, finishing and quality.**

FULL FREE ACCESS FOR DECORATION ON B&C X-LITE SOFTSHELL /DUO JACKETS



DESIGNED TO BE DECORATED

Effective **decoration areas** have been **optimised** on every style, to make sure you can make your customer's brand or message stand out.

PRINT AREAS ON B&C X-LITE SOFTSHELL /DUO JACKETS



Front panels



Sleeves



Back panel